

GRUPO EIDE



EIDE Embragajes I Derivats, S.A.
9271 Calle de Val de Barona 1700
www.eide.net

Tipo: 3500-D Fecha: 05-10
Nº: 003 Par: 2000 Nm
Ref. 0063215D01618 or 47813

Plataforma	Piñón
Vel. 25 m/min.	M= 6 Z= 18
Tara+carga 2700 Kg.	

Sentido de enclavamiento
ANTIHORARIO (CCW)



nil-uni3n:
soplinamientos elásticos

SAFETY SYSTEMS

• TYPE FPC SAFETY CATCH SYSTEM • SAFETY CENTRIFUGAL BRAKES

www.eide.net

TYPE FPC SAFETY CATCH SYSTEM

For lifts (persons and materials), elevators and all kinds of machines.

The safety catch system is a mechanical unit designed to prevent rack and pinion transmission elevators from accidentally falling down.

The system only comes into action when the descent speed is higher than a pre-determined value.

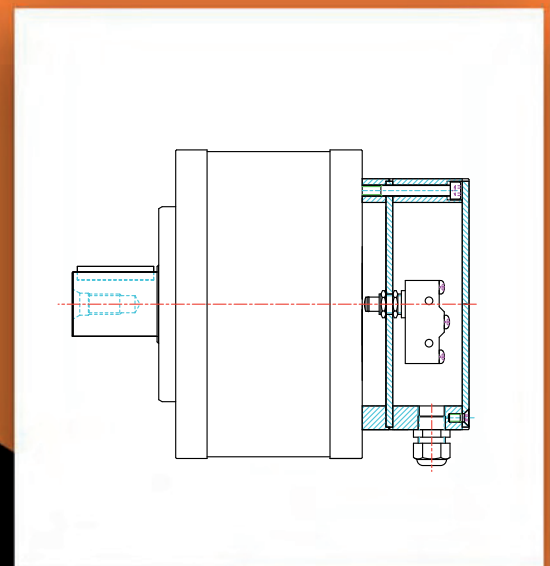
The sensors come into action by means of the centrifugal force, interlocking the non-driving pinion into the structure of the elevator. This interlocking is a gradual process, and the platform is locked once it has been braked.

When triggering the mechanism in the opposite direction to the interlocking, the safety catch returns to its original position. For the machine to operate properly, it is essential to analyze the causes behind the problem affecting the safety catch system so that it can be solved.

These safety brakes have a built-in miniature breaker that comes into action at interlocking time. This makes it possible for this signal to be used to cut the general current of the elevator, to trigger an alarm, etc.



Entrapagos i Derivats, S.A. 1820 Cadix al Lado Surco (Spain) www.eide.es		CE
Tipo: 3500-D	Fecha: 05-10	
Nº: 003	Par: 2000 Nm	
Ref. 0063215001819	or 4793	
Plataforma	Pinón	
Vel. 25 m/min.	M= 6 Z= 18	
Tera+carga 2700 Kg.		
Sentido de enclavament: ANTIGRAPA (C)		





Characteristics

The FPC safety catch systems are units designed to prevent rack and pinion elevators from accidentally falling down.

Their compact and sturdy design makes them particularly suitable for installation in elevators used in wind turbine towers, tower cranes and other industrial applications.

They do not require any external power or signal for their operation, since they are fully mechanical.

The system only comes into action when the descent speed is higher than a pre-determined value. The system comes into action immediately after the speed becomes higher than the set value, and the platform is locked and braked. The braking is gradual.

These safety brakes have a built-in miniature breaker that makes assembly easier and takes up less space.

This miniature breaker comes into action at interlocking time. This makes it possible for this signal to be used to cut the general current of the elevator, to trigger an alarm, etc.

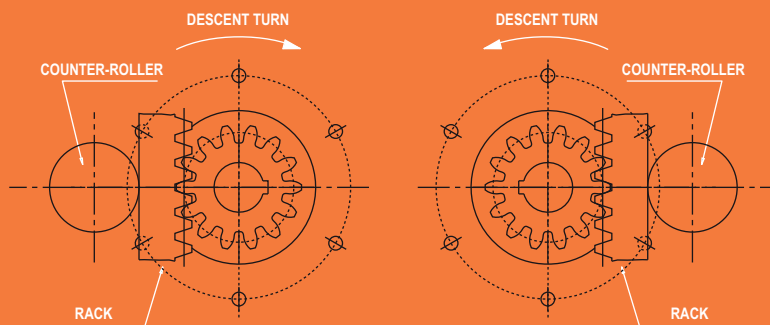


	FPC 1000	FPC 3500
INTERLOCKING SPEED	100-500 rpm.	80-400 rpm.
ADJUSTABLE TORQUE	150-1250 Nm.	900-3800 Nm.

Assembly

LEFT RACK

RIGHT RACK



The unit must be steadily fixed to the platform structure so that its pinion is perfectly centred and engaged to the rack.

Once the unit is assembled, the cables must be connected to the miniature breaker connector. This is in the normally-closed position.

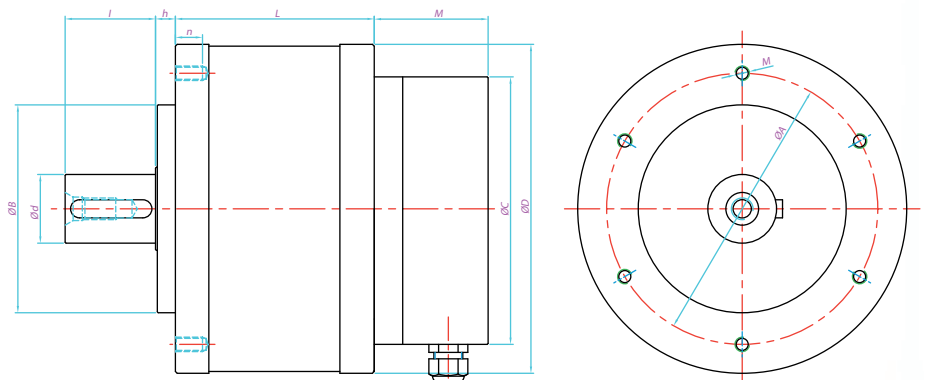
Our wide experience in safety issues forces us to make specific products.

We deliver safety catches already adjusted according to the specific features of the machine where it will be used. It should never be installed in a different machine and traceability must be ensured.

Since it is a safety element, our safety catch is sealed to prevent any interference after our adjustment.

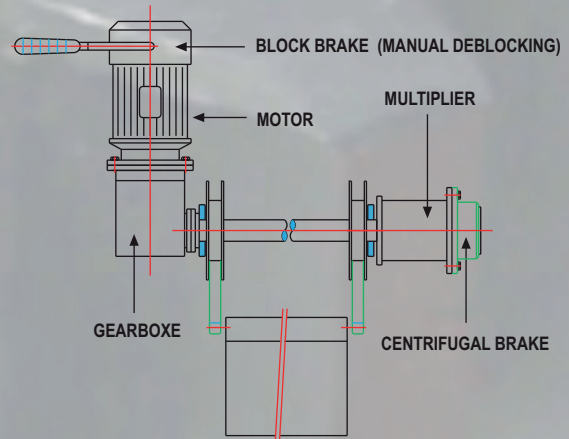
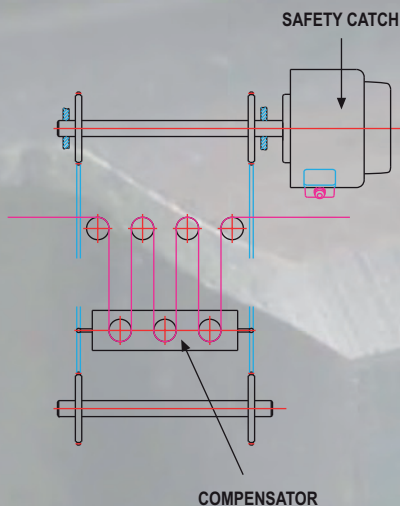
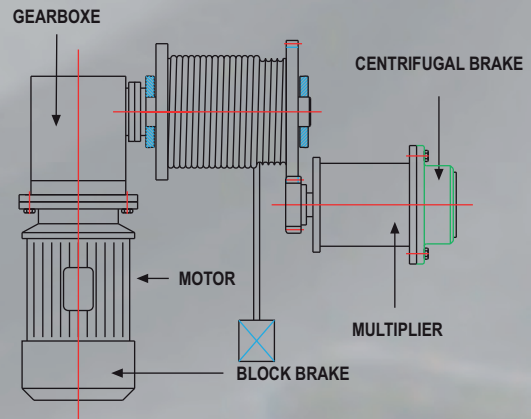
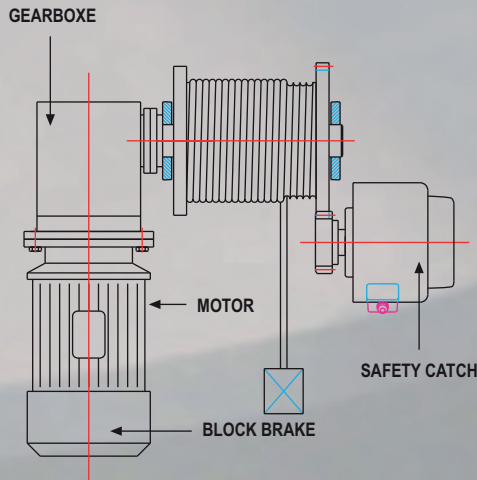
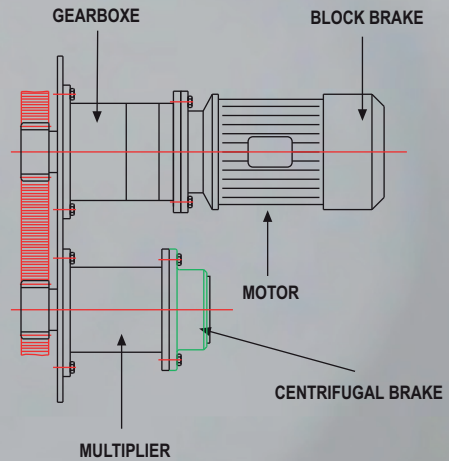
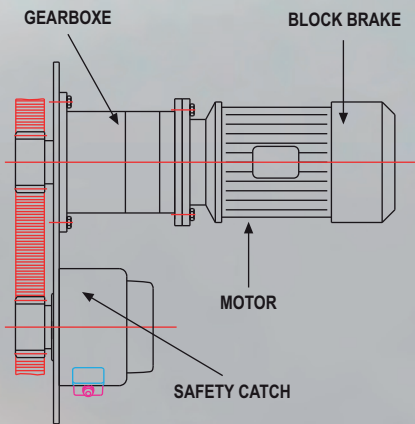
Dimensions

SIZE	FPC 1000	FPC 3500
AØ	150	205
BØ	115	150
CØ	148	148
DØ	180	245
dØ	38	50
Mxn	M8x15	M10x19
l	50	60
h	11	16
L	114	136
M	63	63



TYPE FPC SAFETY CATCH APPLICATIONS TO RACK AND PINION, DRUM CABLE AND COMPENSATOR SYSTEMS, ETC.

It can also be applied to hinged doors, counterweights, palletizers, strapping machines, gondolas, graphic arts machinery, radioactive material containers, motorized cable reels, machine tools, etc.



CENTRIFUGAL BRAKES APPLICATIONS WITH INDEPENDENT TRANSMISSION

The multiplier and the centrifugal brake act as non-driving elements, without contributing any stress. They will only come into action when there is an increase in speed that is higher than the one set. Then, they will start by controlling the descent speed, in the same way as it has been mentioned before. The layouts show a rack and pinion system, but the same applies to drum cable systems. Examples:



TORQUE LIMITERS

ELASTIC COUPLINGS



ELECTROMAGNETIC CLUTCHES AND BRAKE



PNEUMATIC CLUTCHES AND BRAKES



**SAFETY CATCHES AND CENTRIFUGAL BRAKES
ELECTROMAGNETIC AND PNEUMATIC BRAKES AND CLUTCHES
ELASTIC COUPLINGS - TORQUE LIMITERS**

C/ Conca de Barberà, 8 - Polígono Pla de la Bruguera - 08211 Castellar del Vallès - Barcelona (SPAIN)
Telf. +34 93 714 65 11 - Fax. +34 93 714 57 02 - eide@eide.net - www.eide.net